

Hydraulus

Hydraulic Gear Pump 3HPF

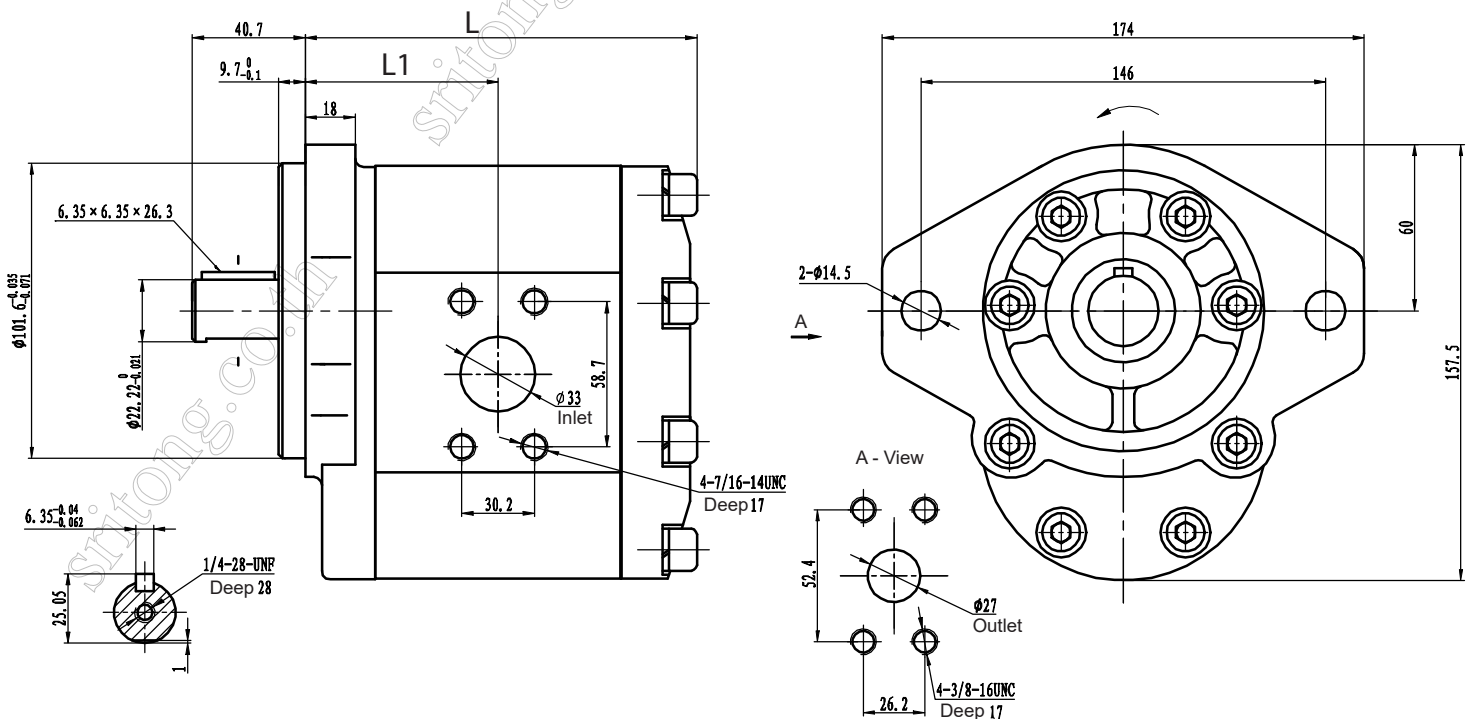
- 3HPF is high pressure gear pump with cast iron end caps and an aluminum housing.
- Standard mounting flange is SAE B-2 bolt.
- Standard ports are SAE Flange port J518 Code 61 size 1-1/4" Inlet and 1" Outlet with UNC thread
- Standard drive shaft is SAE-B, 7/8" straight shaft with 1/4" key.
- Available options include SAE-B, 13 teeth spline shaft and others.



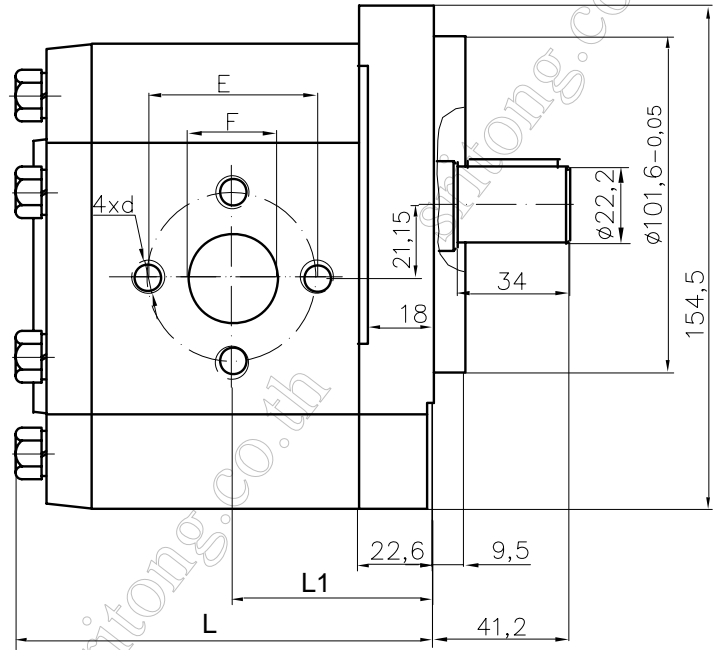
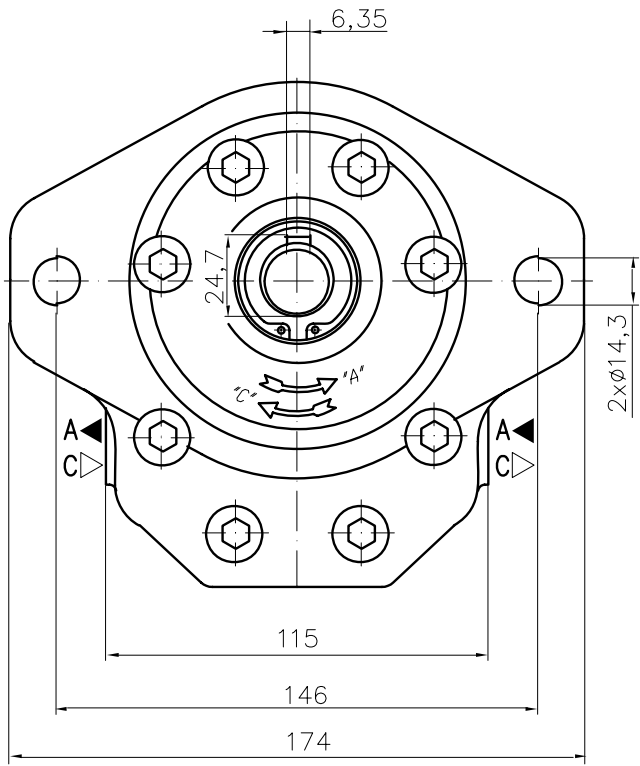
TECHNICAL SPECIFICATIONS AND DIMENSIONS

- Filtration: 25 micron or better
- Oil Viscosity: 6 to 200 cSt
- Inlet Pressure: 0.7 - 3.0 bar (10 to 44 psi) absolute
- Temperature: Oil: -25°C to 80°C / -12°F to 175°F
Ambient: -22°C to 55°C / -8°F to 130°F

Model	Displacement (cc/rev)	Pressure (bar)		Speed (rpm)			L (mm)	L1 (mm)	Inlet	Outlet
		Rated	Peak	Rated	Max	Min				
3HPF34F39P16L	34	200	250	1500	3000	400	138.5	68.0	SAE Flange 1-1/4"	SAE Flange 1"
3HPF39F39P16L	39				3000		142.5	70.0		
3HPF43F39P16L	43				2800		145.5	71.5		
3HPF51F39P16L	51				2400		151.5	74.5		
3HPF60F39P16L	60	180	230		2800		157.8	79.1		
3HPF70F39P16L	70	180	200		2500		164.8	82.5		
3HPF78F39P16L	78	160	200		2300		171.0	85.0		
3HPF89F39P16L	89	140	180		2000		176.0	88.0		



3HPF**F105P16L



Code	Inlet			Outlet		
	E	d	F	E	d	F
F105	51	M10	27	40	M8	19

Sritong.co.th

Sritong.co.th

Sritong.co.th

Sritong.co.th