





DIMENSIONS

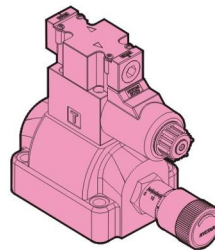
MILLIMETERS(INCHES)

Solenoid Operated Throttle Valves(Pressure compensated)-Subplate Type SDF Series

■ Ordering Code

SDF - **06** - **20**

Series No	Valve Size	Design No
Solenoid Operated Throttle Valve Pressure Compensated Sub-plate Type	06: (3/4")	20 DIN 912 bolts 
	10: (1-1/4")	2090 (North America) 



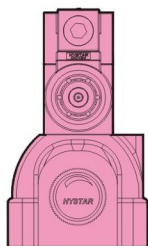
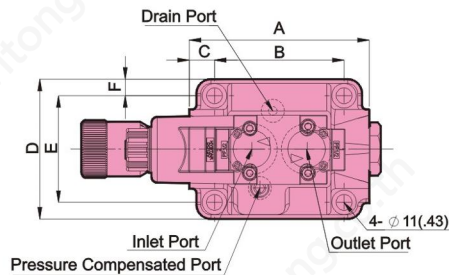
SYMBOL



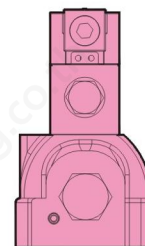
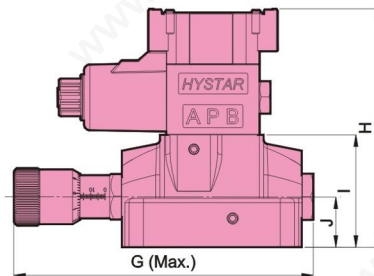
■ Valve Specifications & Attachment

Model	SDF-06	SDF-10
Flow Rating	125 lpm (33 gpm)	240 lpm (63.4 gpm)
Max. Pressure	250 bar (3600 psi)	250 bar (3600 psi)
Weight kg(lbs.)	5.6 (12.3)	8.8 (19.3)
CODE:20	M10 X45LgX4pcs	M12X55LgX4pcs
CODE:2090	3/8-16UNCX1-3/4LgX4pcs	1/2-13UNCX2-1/4LgX4pcs
Surface O-Ring	P12X2pc, P29X2pc	P12X2pc, P34X2pc

SDF-06-10



DEC.



- Dimensions for subplate 06 & 10, reference page 269 for details.
- Dimensions for models with Din connector, reference page 14 for details.

Model	A	B	C	D	E	F	G	H	I	J
SDF-06	125(4.92)	90(3.54)	17.5(.69)	97(3.81)	74(2.91)	11.5(.45)	208(8.18)	166(6.53)	78(3.07)	35(1.37)
SDF-10	150(5.90)	112(4.40)	19(.74)	116(4.56)	86(3.38)	15(.59)	246(9.68)	176(6.92)	88(3.46)	42(1.65)