

# High Pressure Single Vane Pump

## T6C/T6D Series

**INTERMAGNUS**

### Features

- T6C and T6D Series are fixed displacement and balanced type single vane pumps. The pump is designed for higher operating pressure and greater flow at the same housing size.
- With a balanced pin-vane design, outlet pressure is continuously applied only to the pin. The pin provides the steady light force against the vane. The pin and bottom areas of the vane are subject to the same pressure, either inlet or outlet pressure, depending on the vane's location during rotor rotation. This pin-vane design minimizes noise level and improves volumetric efficiency.
- With the cartridge independent of the shaft, allowing for easy

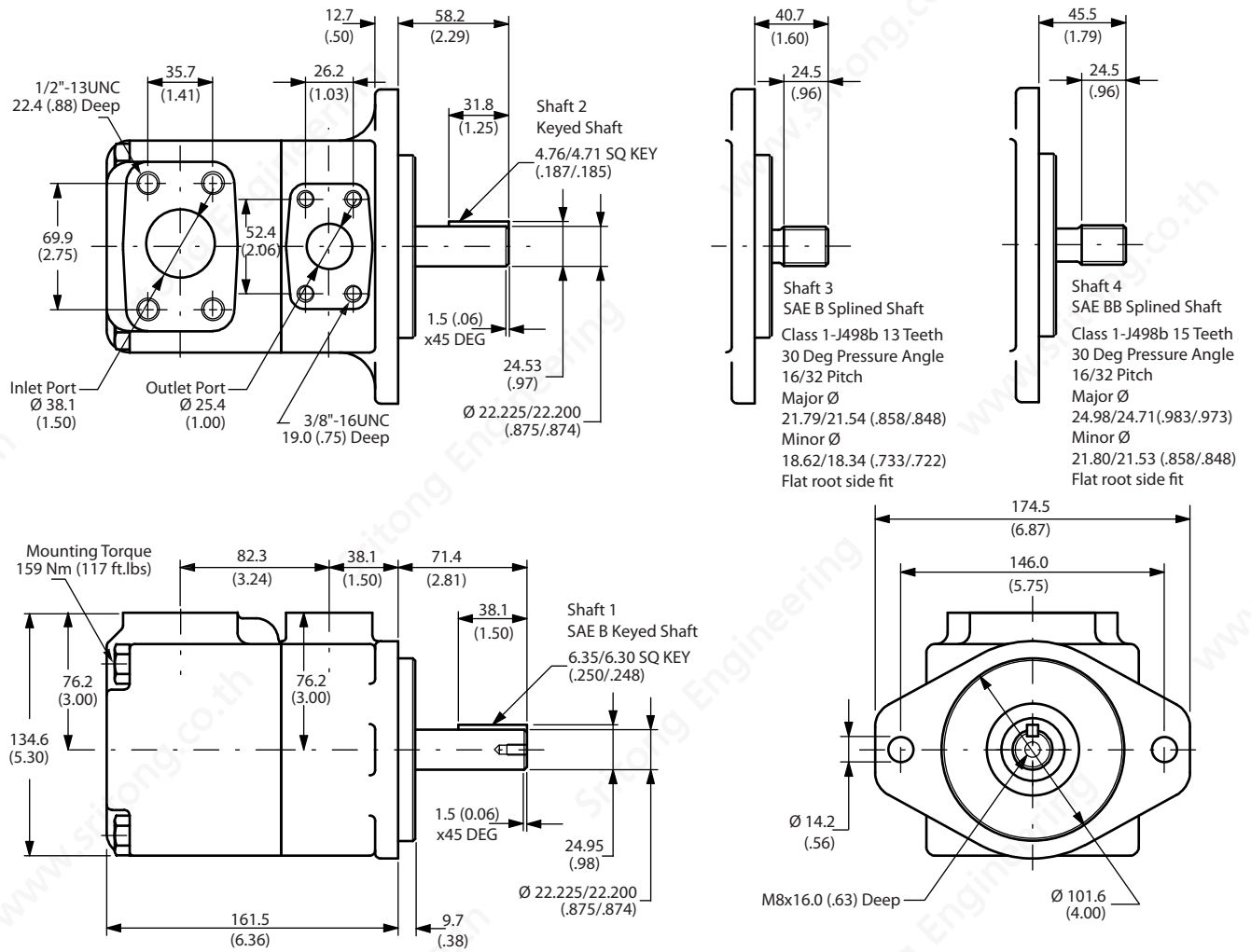


change of flow capacity and field servicing without removing the pump from its mounting.

### Ordering Code

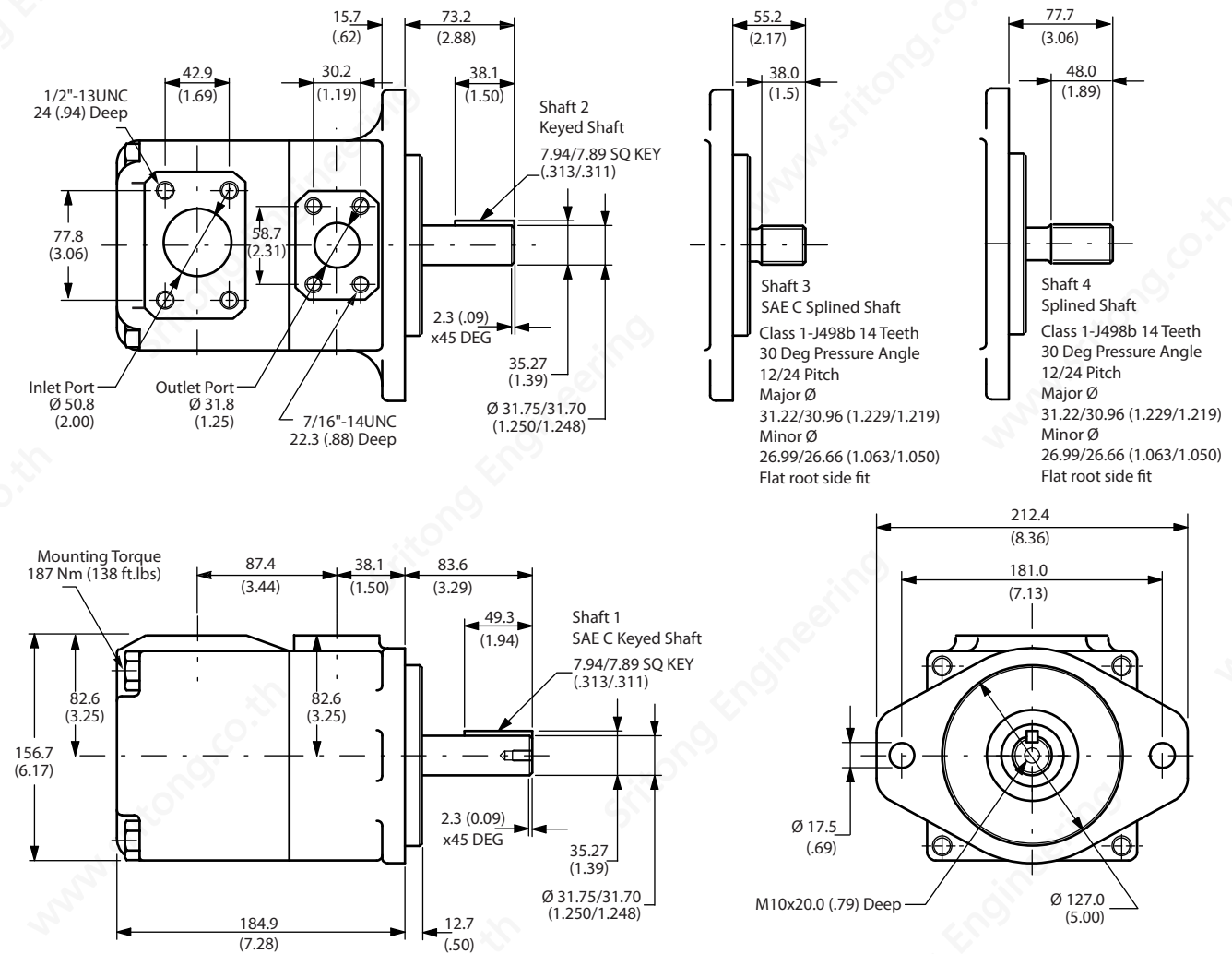
**T6C - 022 - 1R00 - B1**

<p><b>Model</b> T6C, T6D</p> <p><b>Ring Size</b> (USgallon)  <b>T6C</b> - 003, 005, 006, 008, 010, 012, 014, 017, 020, 022, 025, 028, 031  <b>T6D</b> - 014, 020, 024, 028, 031, 035, 038, 042, 045, 050, 061</p> <p><b>Shaft</b>  <i>For T6C</i>  <b>1</b> - SAE B Keyed Shaft  <b>2</b> - Keyed Shaft  <b>3</b> - SAE B Splined Shaft  <b>4</b> - SAE BB Splined Shaft  <i>For T6D</i>  <b>1</b> - SAE C Keyed Shaft  <b>2</b> - Keyed Shaft  <b>3</b> - SAE C Splined Shaft  <b>4</b> - Splined Shaft</p> <p><b>Shaft Rotation</b>          (Viewed from shaft end)  <b>R</b> - Turn right  <b>L</b> - Turn left</p>	<p><b>Seal</b>  <b>1</b> - Buna seal  <b>5</b> - Viton seal</p> <p><b>Design</b>          Subject to change</p> <p><b>Inlet Port position</b>          (Viewed from cover end)  <b>00</b> - Opposite Outlet  <b>02</b> - 90° CCW from Outlet  <b>01</b> - Inline with Outlet  <b>03</b> - 90° CW from Outlet</p>
---	--



Specifications

Size	Displacement cm <sup>3</sup> /r (in <sup>3</sup> /r)	Max Speed rpm	Min Speed rpm	Max Intermittent Pressure bar (psi)	Max Continuous Pressure bar (psi)	Weight kg (lb)
003	10.8 (0.66)	2800	600	280 (4000)	240 (3500)	15 (34)
005	17.2 (1.05)					
006	21.3 (1.30)					
008	26.4 (1.61)					
010	34.1 (2.08)					
012	37.1 (2.26)					
014	46.0 (2.81)					
017	58.3 (3.56)					
020	63.8 (3.89)					
022	70.3 (4.29)					
025	79.3 (4.84)	2500	600	210 (3000)	160 (2300)	
028	88.8 (5.42)					
031	100.0 (6.10)					



Specifications

Size	Displacement cm <sup>3</sup> /r (in <sup>3</sup> /r)	Max Speed rpm	Min Speed rpm	Max Intermittent Pressure bar (psi)	Max Continuous Pressure bar (psi)	Weight kg (lb)
014	47.6 (2.90)	2500	600	240 (3500)	210 (3000)	24 (53)
020	66.0 (4.03)					
024	79.5 (4.85)					
028	89.7 (5.47)					
031	98.3 (6.00)					
035	111.0 (6.77)					
038	120.3 (7.34)					
042	136.0 (8.30)	2200		210 (3000)	160 (2320)	
045	145.7 (8.89)					
050	158.0 (9.64)					
061	190.5 (11.63)	1800		120 (1700)	80 (1160)	