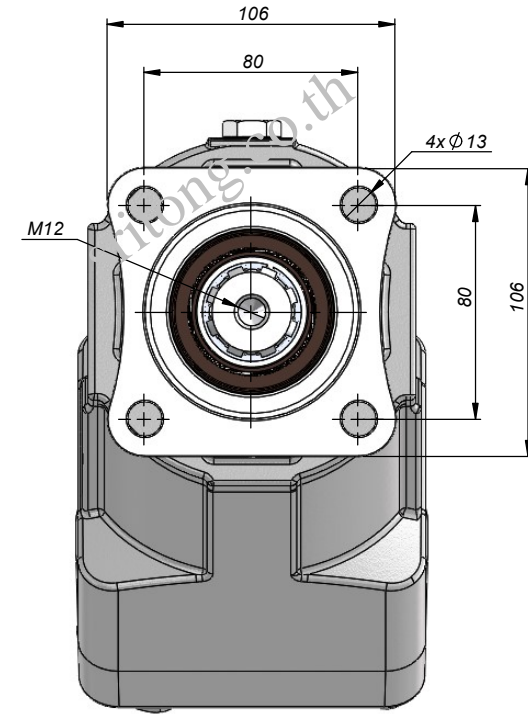
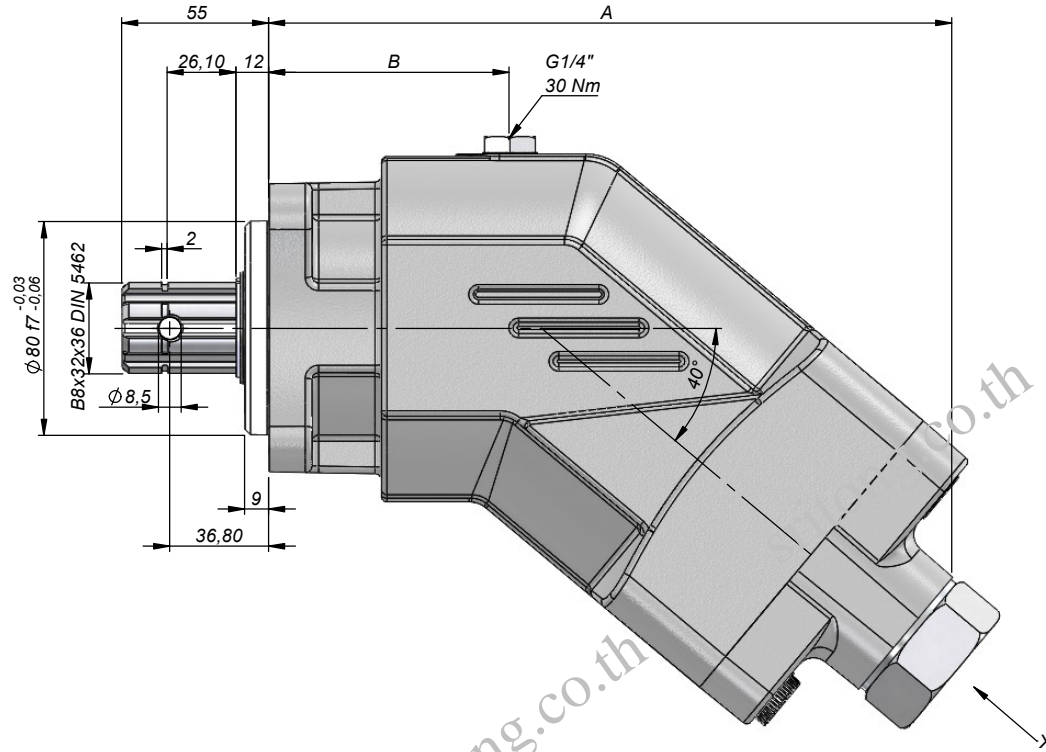
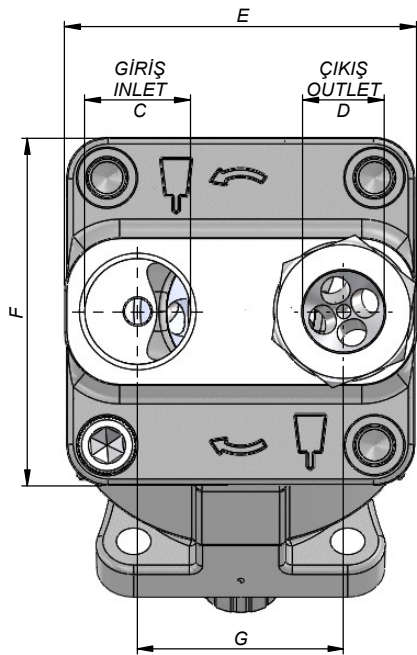


X GÖRÜNÜŞÜ

## BENT AXIS PISTON PUMP

Tapaların Sıkma Torku  
Tightening Torque Of The Plugs

G1/2"	55-65Nm
G3/4"	90-100Nm
G1"	135-160Nm
G1 1/4"	200-230Nm

Kod / Code	İletim Hacmi Displacement (cm <sup>3</sup> /rev)	Max.Sürekli Basınç Max.Continuous Pressure	Maks.Anlık Basınç Max.Peak Pressure	Maks. Hız Max. speed (RPM)		A (mm)	B (mm)	C (inch)	D (inch)	E (mm)	F (mm)	G (mm)
				nom	max							
APA023SF111 APA023SF121	23	350	400	3050	4300	180	58	G3/4"	G1/2"	89	89	52
APA032SF111 APA032SF121	32			2750	3900	180	58	G3/4"	G1/2"	89	89	52
APA045SF111 APA045SF121	45			2650	3800	210	78	G1"	G3/4"	108,70	108,70	59
APA056SF111 APA056SF121	56			2550	3700	218	80			110,50	108	64
APA063SF111 APA063SF121	63			2200	3200	218	80	110,50	108	64		
APA080SF111 APA080SF121	80			2150	3100	245	94	G1 1/4"	G1"	127	118	69
APA107SF111 APA107SF121	107			2000	2800	255				131,60	130	77
APA125SF111 APA125SF121	125			1750	2500	255				131,60	130	77

\*(1) - Left- Sol  
(2) - Right- Sağ

**KAZEL**  
HYDRAULIC EQUIPMENTS