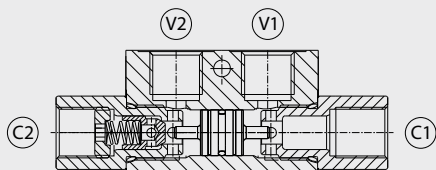


VRSE Valvole di blocco a semplice effetto

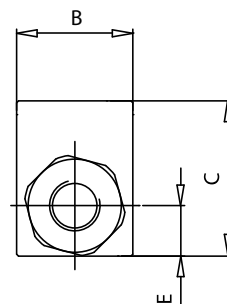
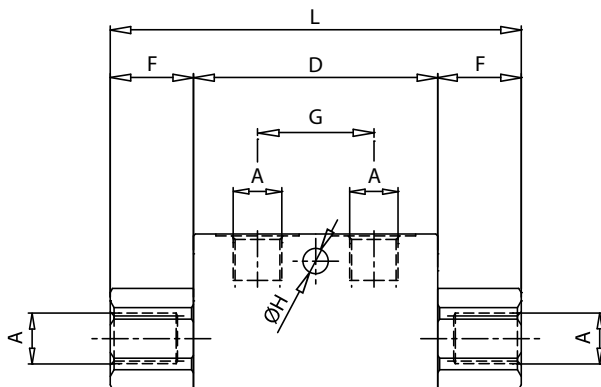
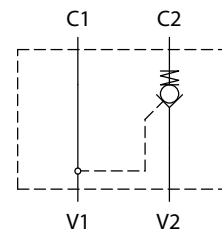
Single acting pilot check valves



Dati tecnici

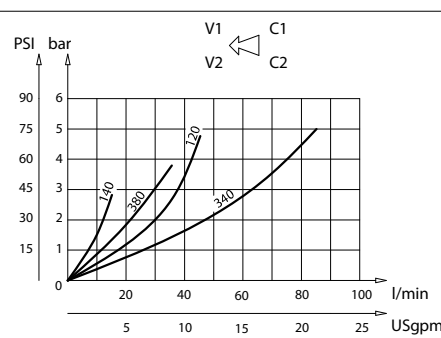
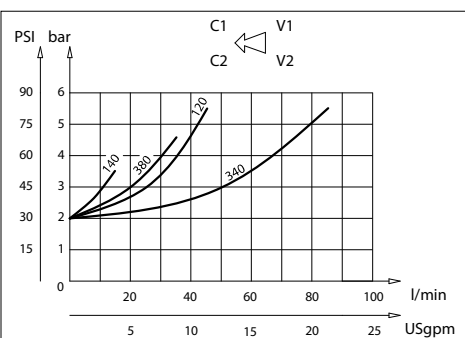
Technical data

| | |
|--|---|
| Olío idraulico Mineral oil | ISO 6743/4 DIN 51524 |
| Viscosità fluido Fluid viscosity | 10-500 mm ² /s 45 to 2000 ssu (6 to 420 cSt) |
| Classe di contaminazione max con filtro Max contamination index with filter | ISO 4406:1999 Classe 19/17/14 |
| Temperatura del fluido Fluid temperature | -20°C +80°C -4°F +176°F |
| Temperatura ambiente Ambient temperature | -20°C +50°C -4°F +122°F |
| È indispensabile l'utilizzo di un filtro (filtrazione consigliata 15 micron) per proteggere la valvola It is necessary a filter use to protect the valve (advised filtration 15 micron) | |
| Trafilamento Leakage | 0 - 0,25 cm ³ /min (0-0,015 in ³) |



mm
Inches

Perdite di carico Pressure drops



Codice ordinazione / Ordering code

VRSE - X

X

Dimensione / Size

140 BSPP 1/4

380 BSPP 3/8

120 BSPP 1/2

340 BSPP 3/4

Caratteristiche tecniche / Technical performances

| Codice Code | A | Portata max Max Flow l/min-USgpm | Pressione Max Max pressure bar/PSI | B | C | D | E | F | G | H | L | Peso approssimativo Approx weight Kg / lb | Rapporto di pilotaggio Pilot ratio |
|-------------|----------|----------------------------------|------------------------------------|-----------|-----------|-----------|-------------|-------------|-----------|------------|------------|---|------------------------------------|
| VRSE140 | BSPP 1/4 | 15 (4) | 320 (4500) | 30 (1.18) | 40 (1.57) | 63 (2.48) | 13 (0.51) | 21,5 (0.85) | 30 (1.18) | 6,5 (0.26) | 106 (4.17) | 0,61 (1.34) | 1:4 |
| VRSE380 | BSPP 3/8 | 35 (9.3) | | | | | | | | | | | |
| VRSE120 | BSPP 1/2 | 45 (12) | 300 (4350) | 35 (1.38) | 50 (1.97) | 82 (3.23) | 16,5 (0.65) | 31,5 (1.24) | 36 (1.42) | 8,5 (0.34) | 145 (5.71) | 1,05 (2.31) | 1:2.9 |
| VRSE340 | BSPP 3/4 | 70 (18.5) | | | | | | | | | | | |