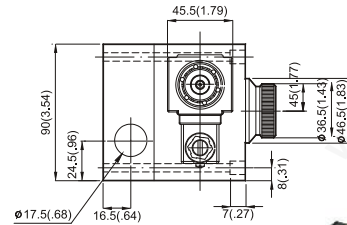
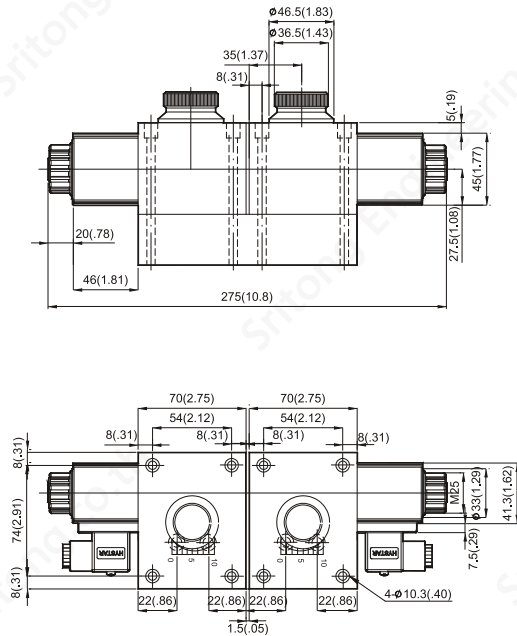


# USING

## DIMENSIONS

## MILLIMETERS(INCHES)

### FKCS-03-S2 Solcon Valves (Pressure Compensated) (Sub-plate Type)



SYMBOL

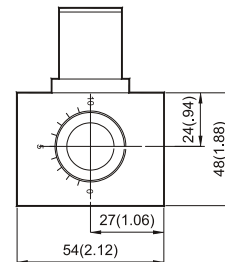
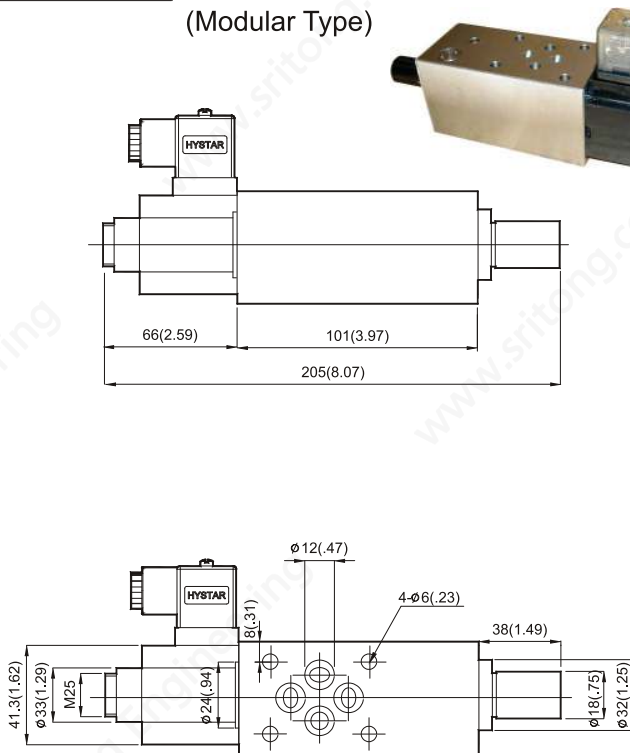


#### Valve Specifications & Attachment

Model	FKCS-03-S2
Flow Rating	30 lpm (7.9 gpm)
Max. Pressure	70 bar (1000 psi)
Weight kg.(lbs.)	5.94 (13.0)
CODE:20	M6 X45LgX8pcs
Surface O-Ring	P12X4pcs

Model	Within Flow Rate Adjusting (lpm)		Connection Bore
	1st Stage	2nd Stage	
FKCS-03-S2-4-2	0.1 - 4	0.1 - 2	PT 3/8
FKCS-03-S2-6-4	0.1 - 6	0.1 - 4	

### FMS-G\*-02\* Solcon Valves (Modular Type)



SYMBOL



#### Valve Specifications & Attachment

Model	FMS-G*-02*
Free Flow	20 lpm (5.2 gpm)
Max. Pressure	70 bar (1000 psi)
Weight kg.(lbs.)	2.42 (5.32)
CODE:20	M5 X100LgX4pcs
Surface O-Ring	P9X4pcs

Model	Symbol
FMS-G*-02T	
FMS-G*-02A	
FMS-G*-02P	

Model	Within Flow Rate Adjusting (lpm)	Connection Bore
FMS-G2-02*	0.1 - 2	PT 1/4
FMS-G4-02*	0.1 - 4	
FMS-G8-02*	0.1 - 8	