

36

配油器 Dester Units

TYPE : WDA/WDB/WDT/WDV

規格說明

WDA, WDB和WDT兩種配油器是用來作各潤滑點配送之用，WDB型是用鋅合金經由模具擠壓而成，可配用WPSS比例分配器與WPAN-4, WPB-4來作配油管之連接，而WDT型是用方型鋁棒經加工後電鍍而成，外形潔美，配油器上各配油點設有流量調整螺絲以調整所需之流量，可配用WPD-4, WPD-6, WPC-4, WPH4等類零件來作配油管之連接。

Specifications

WDA, WDB and WDT dester units are for use in lubrication systems to permit branching of the distribution system to required lubrication points. That WDB series can equip with the parts of WPSS prosper units. WPAN-4, WPA-4 and WPB-4 for pipe dester use. WDT series can equip with the parts of WPD-4, WPD-6, WPC-4 and WPH-4 for pipe dester use. In this type there are have a adjust screw to adjusting the feeding oil.

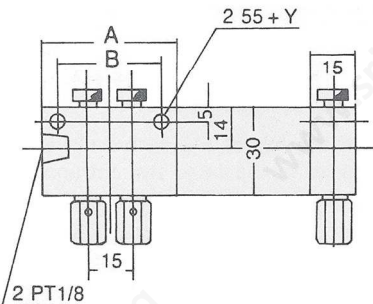
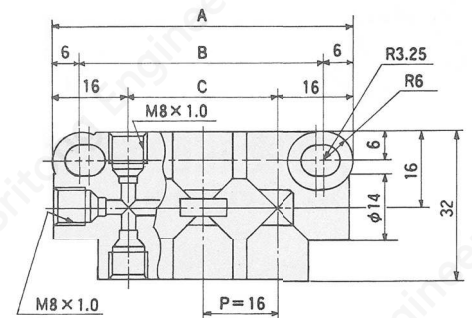
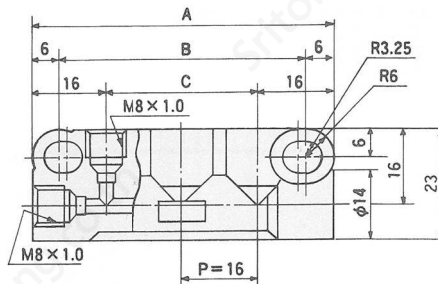
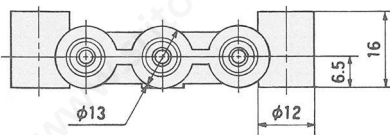
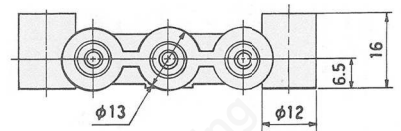
型式TYPE	連接口數	A	B	C
WDA-6	6	48	36	16
WDA-8	8	64	52	32
WDA-10	10	80	68	48
WDA-12	12	96	84	64

型式TYPE	連接口數	A	B	C
WDB-4	4	48	36	16
WDB-5	5	64	52	32
WDB-6	6	80	68	48
WDB-7	7	96	84	64
WDB-8	8	112	100	80
WDB-9	9	128	116	96
WDB-10	10	144	132	112
WDB-12	12	176	164	144

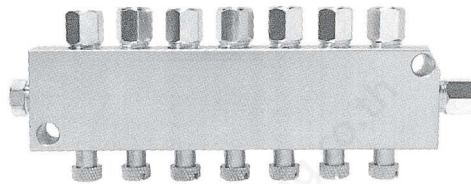


WDB

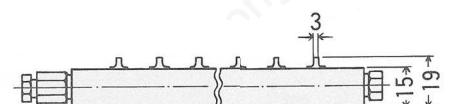
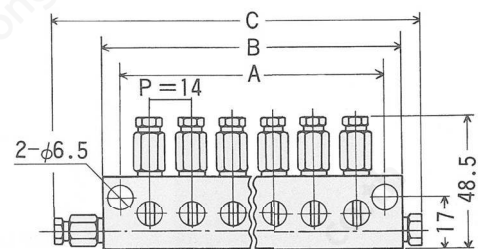
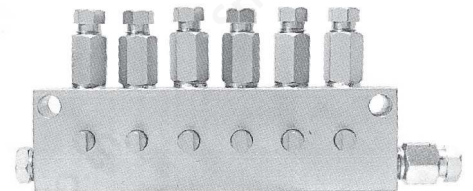
WDA



WDT



WDV



型式Type	連接口數points	A	B	備註
WDT-2	2	45	35	附止回閥及調整閥
WDT-3	3	60	50	"
WDT-4	4	75	65	"
WDT-5	5	90	80	"
WDT-6	6	105	95	"
WDT-7	7	130	110	"
WDT-8	8	155	125	"
WDT-9	9	140	140	"
WDT-10	10	165	155	"
WDT-12	12	195	180	"
WDV-2	2	45	35	附調整閥
WDV-4	4	75	65	附調整閥
WDV-6	6	105	95	附調整閥
WDV-8	8	155	125	附調整閥
WDV-10	10	165	155	附調整閥
WDV-12	12	195	180	附調整閥