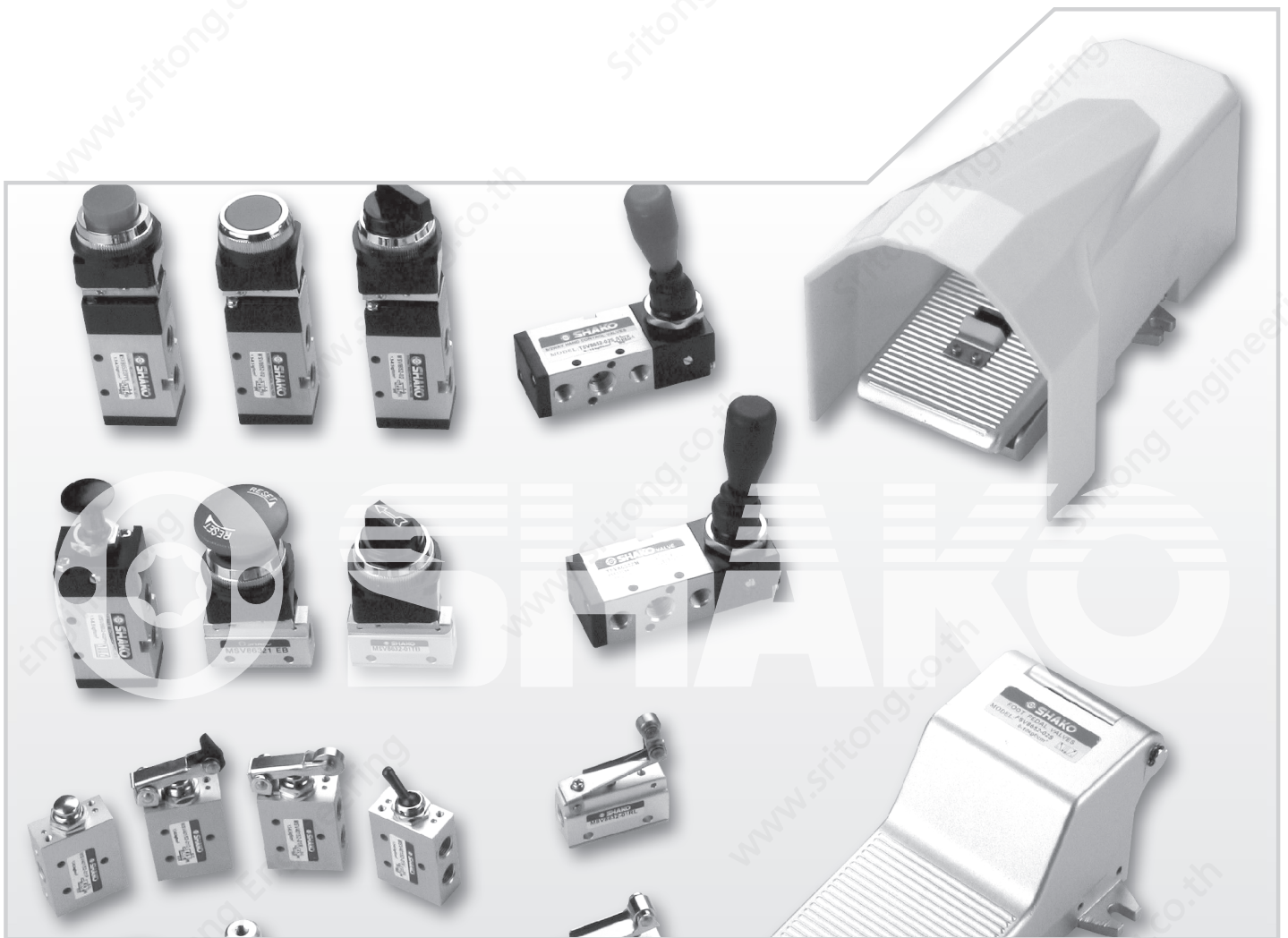
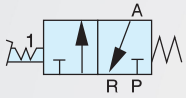


MECHANICAL VALVES



Symbol

• FSV8632-02M



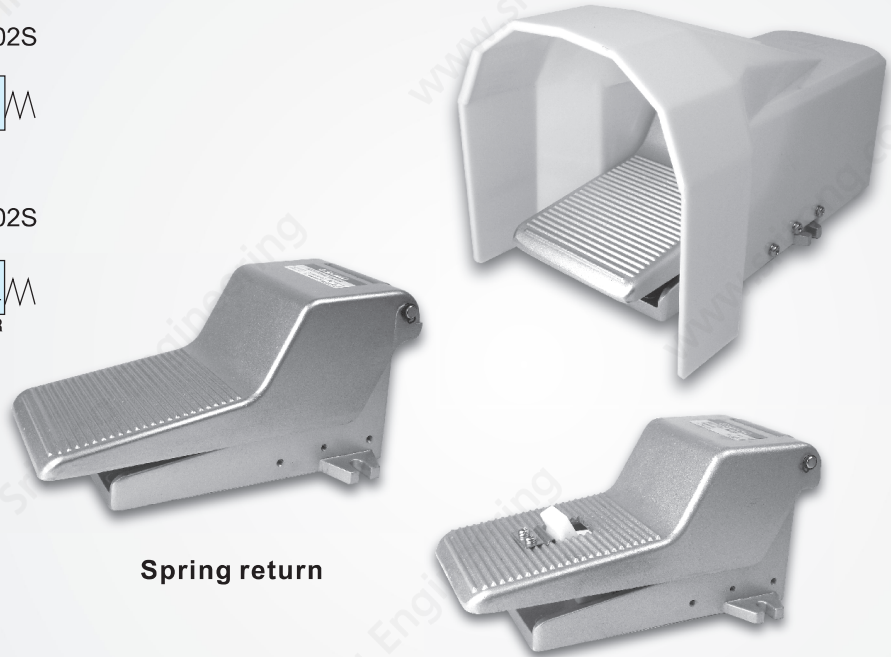
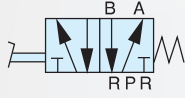
• FSV8632-02S



• FSV8652-02M



• FSV8652-02S



Spring return

Detent

Features

- * Aluminum alloy construction for durable use.
- * Available to be installed with polycarbonate protective guard.

How to order

FSV8632

02

N

M

F

Foot pedal valves

Port size

Thread

Acting

Protective guard

FSV8652	5/2 way
FSV8632	3/2 way

02	1/4"
----	------

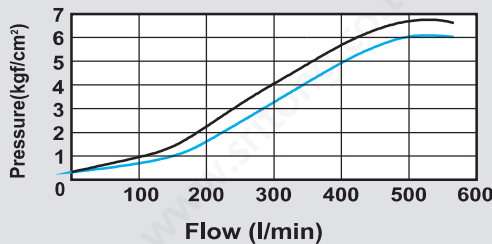
Blank	PS
N	NPT

S	Spring return
M	Detent

Blank	W/O guard
F	W/I guard

Flow chart

Model: FSV86

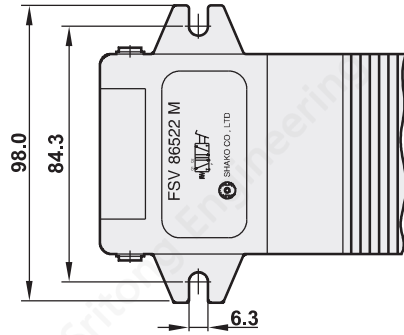


Specifications

Model	FSV8632-02	FSV8652-02
Port size		1/4"
Body material		Aluminum alloy
Fluid		Compressed air
Sectional area		12mm ²
Operating pressure range		0 ~ 9 kgf/cm ²
Max. operating pressure		10 kgf/cm ²
Ambient temperature		-10°C ~ 60°C

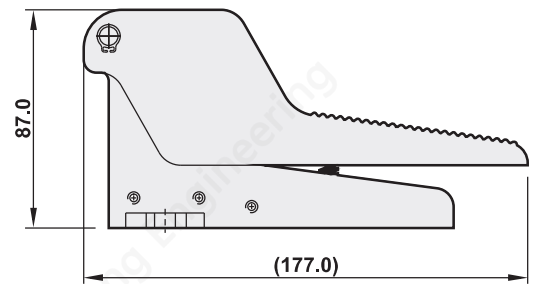
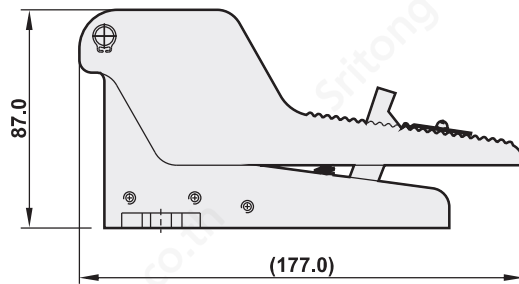
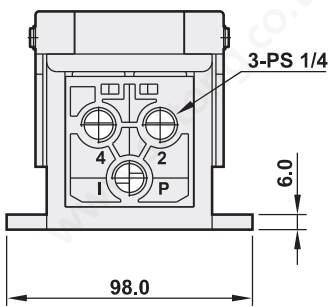
Dimensions

- FSV8652-02M(S)
- FSV8632-02M(S)



Detent

Spring return



MECHANICAL VALVES

Guard dimensions

Explosion

